

Comparison between Arduino Based Wireless and Wire Methods for the Provision of Power Theft Detection

Manal Shlibek¹, Mohamed Mhereeg²

¹MSc- School of Engineering/ Libyan Academy- Electrical Engineer at GECOL

²Assistant Professor- Faculty of Information Technology- Tripoli University

ABSTRACT

This paper is focused on the differences between the wire and wireless source codes sets that were generated to provide power theft detection solutions. In this work Arduino boards are used to detect both power theft and excessive power usage. Arduino boards are put on both substation side, named Master board, and consumer side named Slave board. Transferring data from Slave to Master via either wire or wireless modules were illustrated. The target of implementation of this project is to save a huge amount of electricity which is one of the main common problem that general electricity company of Libya (GECOL) is suffering from and put the power grid in frequently collapse. The paper will provide the analysis of two different circuits with their source codes, with comments of both codes. One of the two circuits was done by Proteus simulator to show wireless communication techniques. The other circuit was done by hardware project to show wire communication techniques. Also, the paper will provide the explanation of how to build Arduino Code written with Arduino C, information to assist you with understanding what you need to do to communicate electronic devices with Arduino kit, and guidance to show you how to implement the simulation of the system in Proteus simulator.

Keywords: RF 433, Aduirno, Current Sensors, Relay, LCD displays, GECOL, Proteus.

1. Introduction

In Libya, power theft is a common problem, which results in loss of electrical. The general electricity company of Libyan (GECOL) is the solely company responsible for supplying electricity. Because of the electricity theft, GECOL is facing the frequent problems of load shedding. This power theft phenomenon is definitely needed to be decreased as much as possible. The paper is designed to overcome of this phenomenon. As the ways for stealing the electricity is countless so we can never keep track where exactly the theft has occurred. The proposed system via Arduino kit will automatically calculate the real power consumption from

houses or buildings in general and compare the real measured data with the assumed consumption data.

The Arduino kit attached to energy meter at substation side, which is pole 1, named Master kit. The Arduino kit attached to energy meter at home side, which is pole 2, named Slave kit. The measured data will be transferred via wires from Master kit to Slave kit. The Arduino kit attached to every pole consists of Atmega328 and ACS712 module-current sensor, voltage sensor, and LCD display. The current sensor senses the amount of current that flow through the Slave kit. the sensed reading will be fed to microcontroller/Atmega328 type. Then the Arduino will calculate this sensed reading and send it to Master kit. Depending on current sensor readings at poles 1 and 2, the power theft is detected. The target of the paper is to design a system which automatically detects and control illegal connection of electricity. The simulation was done in this paper by Proteus to design and model of power theft detection and monitoring. Many studies related to electricity theft have been done. In 2013, Pandey, Gill, and Sharma proved that applied Zigbee technology to wirelessly detect the electricity theft, give high efficient and inexpensive method [1]. Moreover, in this year, Patil, Gopal, and Kirtikumar made a real time system to identify wirelessly where exactly the location of illegal tapping is done on a specific distribution line in case a theft is done by tapping. The model was tested for varying amounts of power thefts and also for different types of circuit approximations [2]. By the year 2014, Prashanthi, and Prasad made an organization model to calculate exactly the power consumed in a household consumers from a main source connected on that area at a certain time.

This work is detecting the illegal use but not for finding out where exactly it is [3]. In 2015, Dike, et. al. made a system to send a message instantaneously when the theft is done at a certain location [4]. While, two years later, 2017, Prakash, Jebaseeli, and Sindhu identified power theft project using GSM technology. The objective of their project is to design a system which will try to minimize the illegal use of electricity and also reduce the chances of theft. This paper presented the different methods of power theft and the methods to identify the theft occurred in houses and industries [6]. Lastly, in 2018 Saini stated that a primary cause of high distribution losses in India state is a power theft and presented a solution [5]. In the same year, 2018, Khan, Xie, , et. al , designed and Modeled an anti-theft electricity distribution system, their proposed system detects the illegal load and burns it by sending high voltage signal from capacitor bank. The legal load is made safe and uninterrupted during execution of illegal load [7].

2. Proposed System and Methodology

2.1 The Idea of the Proposed System

This paper presented a wire control system that provides a solution of power theft problem by placing the system which will be constructed utilizing the Arduino UNO microcontroller.

Arduino with current sensor and voltage sensor will be formed as a number of Master and Slave boards. The proposed system was designed to detect exactly where the probable of both "the power theft" and "the excessive power usage" have occurred in a specific home. They will assist in the distinction of the illegal consumption. However, the Microcontroller will be interfaced between the energy meter and a wire communication network in order to transfer data.

A signal will be sent from the consumer side to the substation side in case there is a difference in the compared values. The paper shows the technique of transferring data from Slave board, which is supposed to be connected with consumer side, to Master board, which is supposed to be connected with substation side. Actually, using a communication module to wirelessly send data is easier, more interesting, and reliable. While, sending data using wire style is less expensive. However, sending a notification message to inform GECOL that there is an additional unexpected consumption detected in that specific home or in that particular electricity pole. As a result, GECOL can ensure whether or not this detected power is authorized by the company.

Consequently, the power theft once detected the procedures will be taken by the company. The Master and Slave boards consist of same components (explained in section 2). As each board has a different functionality, the difference between them is the code written in C/ C++ language. This paper will provide the analysis of three different forms of source codes with comments, explanation of how to build Arduino Code written with Arduino C, information to assist you with understanding what you need to do to communicate electronic devices with Arduino kit, and guidance to show you how to implement the simulation of the system in Proteus simulator.

2.2 Functions of Components

2.2.1 Arduino UNO microcontroller

Arduino is an open-source electronics platform based on easy-to-use hardware and software. It's intended for anyone making interactive project. Arduino board senses the environment by receiving inputs from many sensors, and affects its surroundings by controlling lights, motors, and other actuators. Arduino software, you can tell your Arduino what to do by writing code in the Arduino programming language and using the Arduino development environment [8].



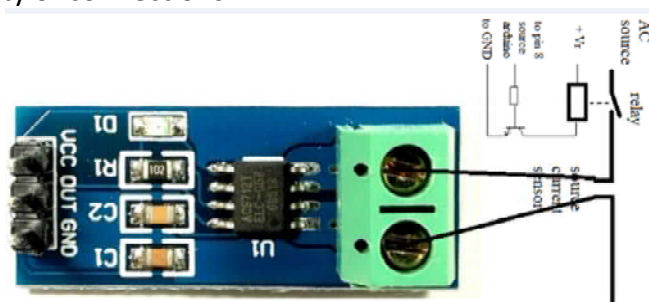
2.2.2 Atmega328:

An Arduino board consist of Atmega328 IC. In this Atmega328 IC we can implement our program [11].

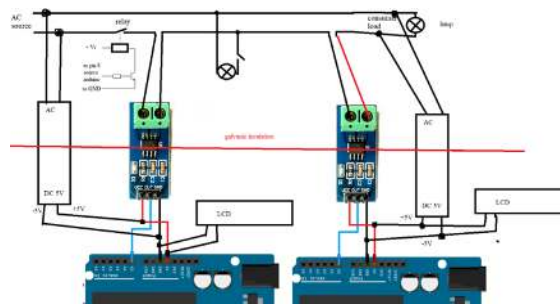


2.2.3 ACS 712 module-current sensor

The ACS 712 consists of a a precise, low-offset, linear Hall sensor circuit with a copper conduction path located near the surface of the die. Applied current flowing through this copper conduction path generates a magnetic field which is sensed by the integrated Hall IC and converted into a proportional voltage. Device accuracy is optimized through the close proximity of the magnetic signal to the Hall transducer. A precise, proportional voltage is provided by the low-offset, chopper-stabilized BiCMOS Hall IC, which is programmed for accuracy after packaging [13]. Using of ACS712 AC Module is the best solution due reliable, accuracy and simplicity of connections.



ACS712 has no a specific commands into the code. it give current-proportional DC voltage on A0 Arduino pin. in code this value is routine. ACS 712 has galvanic insulation low-voltage logical part from AC high voltage input . AC- DC 5V converters has galvanic insulation too. So, when ACS712 is connected to Arduino, it won't burn the Arduino kit. Arduinos, , LCDs, current sensors and voltage sensors supply take from individual DC 5V voltage sources (do not take from AC 230 lines).



2.2.4 Rf 433 MHZ

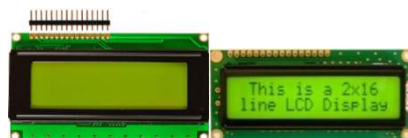
The RF 433MHz Transmitter/Receiver modules with Arduino. One of its application environment is the automobile anti-theft products [9]. An RF module stands for radio frequency module. It is a small electronic device used to transmit and/or receive radio signals between two devices. The medium of this wireless communication does not require line. It is either through optical communication or through radio frequency (RF) communication [10]. It will be hard to run the RF 433MHZ module for wireless communication., but it cheap, stable and it has enough communication range.

2.2.5 WCS 2702 module-current sensor

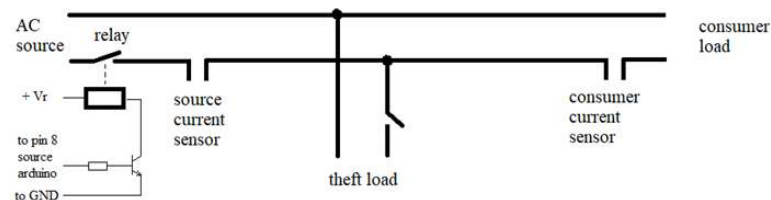
The WCS2702 consists of a precise, low-temperature drift linear hall sensor IC with temperature compensation circuit and a current path with 98mΩ typical internal conductor resistance. This extremely low resistance can effectively reduce power loss, operating temperature and increase the reliability greatly. Applied current flowing through this conduction path generates a magnetic field which is sensed by the integrated Hall IC and converted into a proportional voltage [14].

**2.2.6 Liquid Crystal displays (16x2) and (20 x4)**

LCD (Liquid Crystal Display) screen is an electronic display module. It is a flat panel display, electronic visual display. In this paper there is an interfacing 20x4 & 16 x2 LCD With Arduino. A 16x2 LCD means it can display 16 Columns and 2 Rows. A 20x4 LCD means it can display 20 Columns and 4 Rows.



2.2.7 Power part of stand

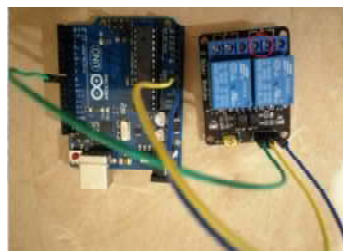


On scheme:

- any low-voltage relay with enough for theft + consumer loads current.
- any n-p-n transistor with enough for relay current.
- resistor on 200-300 Ohm.
- Vr – plus of supply source of relay. Relay cannot be supplied from Arduino internal stabilizer because much more current is need. Also relay work voltage usually exceed 5V. In my stand I use 24V relay and consequently 24V DC current source to +Vr and GND is connected.

2.2.8 Relay (10A)

The low voltage side of relay is connected to Arduino as shown in next figure. Power contacts of relay connected to the main line. The high voltage side of relay has to two exits, one of its exits contact to plug, and other connected to the source current sensor. No matter which types of relay is the best because all give 10 A. They are equivalent.



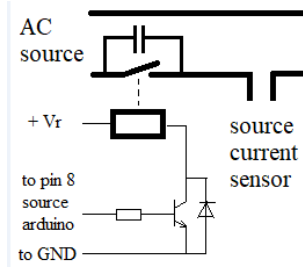
3. Software implementation for hardware project

In this paper, we are going to discuss and compare between two techniques of data transmitting, by wire and wireless communication.

3.1 Data transmitting by wire communication:

The proposed system was designed in hardware project. The system takes power supply from the Ammeter as shown in figure1. Also because ACS712 has overheating if current exceed 10A, so I used 13A max current. If you use 30A current on my opinion ACS712 will damage. If the power = 1000 kw, $1000 \text{ kW} / 230 \text{ v} = 1000\text{W} * 1000 / 230\text{V} = 4347 \text{ A}$ - its first

1000 kW is very big power. like power station, but not substation. So, you must to controll current by ammeter or connect low-power load. for ex. if $\text{consumer_load_power} + \text{theft_load_power} = 2.3 \text{ kW}$ you get $2300\text{W}/230\text{V} = 10\text{A}$ current it is safe for ACS712.



On scheme, relative to AC source. We have three electrical circuits (Master, Slave, and Theft Circuits):

3.1.1 The Master Circuit:

The Master circuit contains AC input top, source current sensor, relay and LCD. Relative to AC source, it's serial connection of components.

Figure 1. shows the Master network.



3.1.2 The Slave Circuit:

The Slave circuit contains AC input top, source current sensor, consumer lamp, and LCD. Relative to AC source, it's serial connection of components.

Figure 2. shows the Slave network.



3.1.3 The Theft Circuit:

The Theft circuit contains AC input top, source current sensor, tumbler switch, theft lamp, source current sensor, relay, and ac input bottom. Relative to AC source, it's serial connection of components. If we received 5 times in a row current exceeding we make conclusion theft=true.

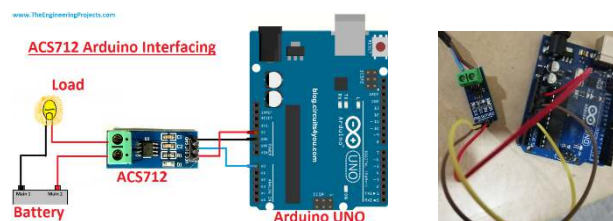
Figure 3. shows the Theft circuit.



3.2 Interfacing devices with Arduino:

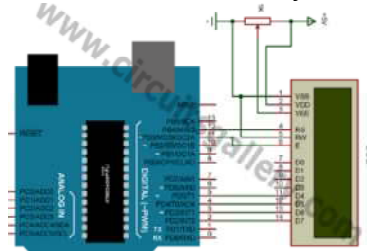
3.2.1 The connection of hall-effect based sensors with ACS712 30A to consumer Arduino and to source Arduino:

Figure 4. shows the connection of current sensor to Arduino.



3.2.2 The connection of LCD1602 to consumer Arduino and LCD1604 to source Arduino:

Figure 5. shows the connection of LCD to Arduino.



Also you may use your own scheme lcd connection but you must change pin configuration in Master Arduino and Slave Arduino sketches.

3.2.3 Connection of consumer Arduino to source Arduino by 3 wire connection:

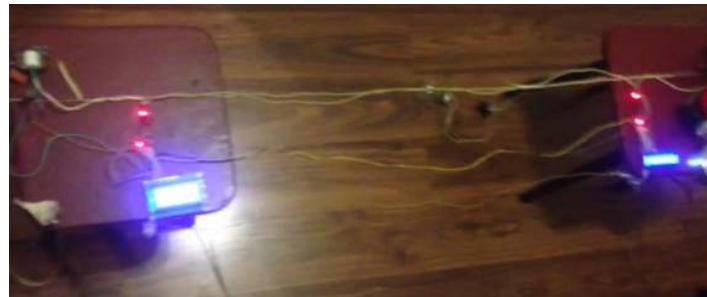
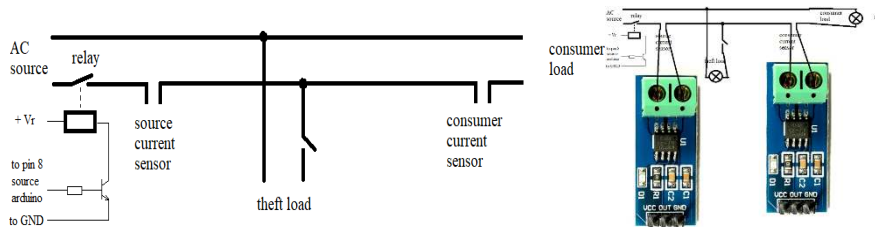
A4 pin to A4 pin, A5 pin to A5 pin, GND pin to GND pin.

Figure 6. shows the connection of two Arduino boards.



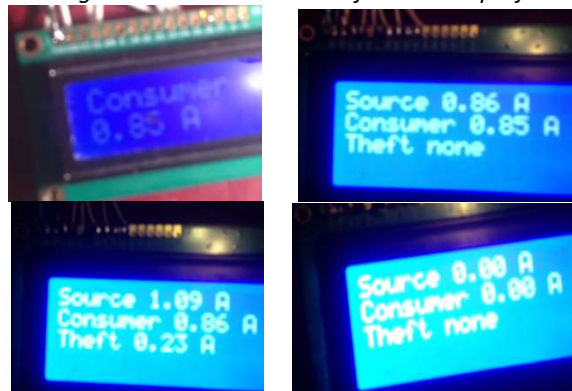
3.3 The hardware of the power theft detection circuit:

Figure 7. shows the main distribution line.



3.4 Results of The hardware of the power theft detection circuit:

Figure 8. shows the result of hardware project.



3.5 The source code of Master kit for wire communication:

Here, we just calculated and compared the current values between Master and Slave. The instructions that have been used in the code of Master board for wire communication are:

```
void setup() { pinMode(8, OUTPUT); digitalWrite(8,0); } // for interfacing relay.
```

```
Wire.begin(2); // join i2c bus with address 2 , it is not necessary number 2, you may change  
arduino pole 2 adress to 3, but in arduino pole 1 you must change request adress  
Wire.requestFrom(2, 5); // request 5 bytes from consumer arduino to Wire.requestFrom(3,  
5); // request 5 bytes from consumer arduino
```

```
Wire.onRequest(requestEvent); // register event, it define functions, that will execute when  
request from arduino pole 1 is received.
```

```
void requestEvent() { // Sending consumer current to source part arduino  
String str = (String)consumer_current; for(byte i=0; i<5; i++) { Wire.write(str[i]); }  
unsigned long adc_result=0; // We used arduino built-in ADC
```

```
for(int j=0; j<5; j++) { adc+=analogRead(A0); } float adc_average = float(adc)/5; // The  
average adc result for 5 measuring is calculated for eliminate ACS712 measure fault. Then it  
average results averaged another 300 times for getting average ADC result for 0.1 sec. It need  
for integrating current for a few alternative current periods [14].
```

```
int adc_measure_num=300; // It experimentally chosen value - 300 times 5 measurements  
give about 0.1 sec measuring cycle duration.
```

```
float adc_null=510.5; // Theoretically, if the current = 0, the ACS712 should produce a 512  
ADC result. but it is ACS712. So, we selected values to minimize the measurement error (510.5  
value) was written instead of 512 to minimize measurement error. We have AC current, that  
have a sine form. so, for measuring we must integrate current for few current periods.
```

```
if(Wire.available()){ consumer_current_str=""; } while (Wire.available()) {  
consumer_current_str+=(char) } // slave may send less than requested.
```

```
Wire.read (); // receive a byte as character.
```

```
consumer_current = consumer_current_str.toFloat();
```

```
if(source_current>0.1 && abs(source_current-consumer_current) > source_current*0.05)
```

```
{ theft_count++; } // finding module source_current-consumer_current and 5% is need  
because ADC convert error (in other words consumer current may few exceed source current)
```

```
else{ theft_count=0; } if(theft_count==5) { theft_count=0; theft=true; digitalWrite(8,1); }
```

```
// If we received 5 times in a row current exceeding we make conclusion theft=true. You can  
put any number instead of number 5. The greatest value you put the great reliability you  
achieve, low value reduces the response time. We have AC current, that have a sine form.  
so, for measuring we must integrate current for few current periods. RMS AC CURRENT =
```

1/number of measuring*sqrt((i1)^2 + (i2)^2 + (i3)^2 + ...). Now we use " String
consumer_current_str = ""; ", because I2C wire connection transmit char-type data.

bool theft=false; // because it bool-type data. We can use char instead of bool, , but some code re-writing is need. ACS712 has a some measuring error and sometime source_current>consumer_current for no theft mode is occurred , so if we will do theft=true conclusion from one measuring we will often get wrong result. so I did also so: we calculate amount of source_current>consumer_current event and if that more some threshold value theft=true conclusion is do.

```
if(source_current<10)          {          lcd.print(((String)source_current).substring(0,4));  
lcd.setCursor(5,1); print A; // if consumer_current<10, (ex. 9.81 A), then 4 symbols is needed.  
So by substring(0,4), get first 4 symbols, then print 9.81.
```

```
else{ lcd.print(((String)source_current).substring(0,5));} // else, for ex. 20.31 A - 5 symbols is  
needed. So substring(0,5) - get first 5 symbols, then print 20.31.
```

Wire.requestFrom(2, 5); // for requesting 5 bytes from consumer arduino, for example we measuring 12.23 A current. consumer arduino must transmit to source arduino ASCII symbols that equivalent "1", "2", ".", "2" and "3" char. So it 5 symbols. Also pay attention real current limit for ACS712 30A significantly less 30A. Already on 10 A sensor is overheating and measuring error increase.

```
float adc_average = float(adc)/5; for(int j=0; j<5; j++){ adc+=analogRead(A0); }
```

// for ADC circuit, but you can use 6 instead. because 5 ADC value is summed up.

Also you may write:

```
float  adc_average =float(adc)/10; for(int j=0; j<10; j++) {adc+=analogRead(A0);}  
adc_null = 510.5; // depending on RMS AC current formula, ADC result for current=0,  
adc_average previously averaged current-proportional ADC value.
```

```
pow(adc_average-adc_null,2); // is (adc_average-adc_null)^2.
```

```
pow(5.0/1024.0/0.066,2); // for finding current value from ADC value, pow function is used.  
It is one of Arduino functions .
```

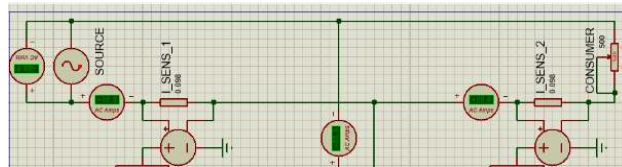
ADC*5.0/1024.0 ; // we find voltage on arduino pin from measured ADC value and /0.066 because it is sensitivity of ACS712-30A so we have current value and then we calculated pow(5.0/1024.0/0.066,2). Also, because if you see RMS AC CURRENT formula - if we need to find I^2 and I=ADC*coefficient, than I^2 = ADC^2 * coefficient^2.

4. Software Implementation for Simulation Project

4.1 Data transmitting by wireless communication:

The proposed system was designed in Proteus version 8.6. the system takes power supply from the main distribution line as shown in figure 9.

Figure 9. shows the main distribution line.



4.2 Interfacing devices with Arduino:

The system detects the theft whenever is occurred. It is supposed that at substation side which is pole 1 there is Arduino kit named Master board, and at consumed side which is pole 2 there is Arduino kit as well named Slave board. Transferring data from Arduino at pole 2 to Arduino at pole 1 through modulo RF 433 MHz modules. Figures 10 and 11 show the Simulation results of both Master and Slave Board respectively.

Figure 10. Simulation result of Slave Board

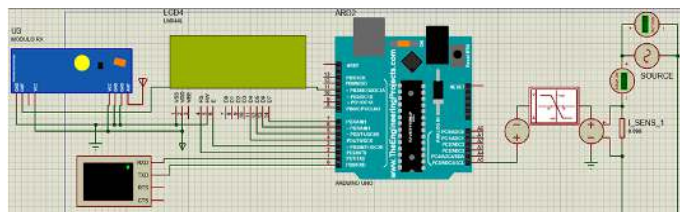
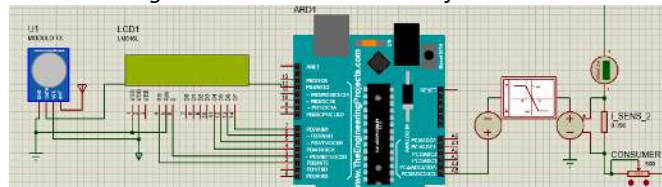


Figure 11. Simulation result of Master Board.

For best accuracy it will be more correct to use external ADC module (it has greater resolution than in-build arduino ADC). In the proposed system there are two potentiometers and switch:

- Switch 1 "SW1" for switching power line regime (theft or no theft).
- First Potentiometer "Consumer" for adjusting consumer current consumption.
- Second Potentiometer "Theft" for adjusting theft current.

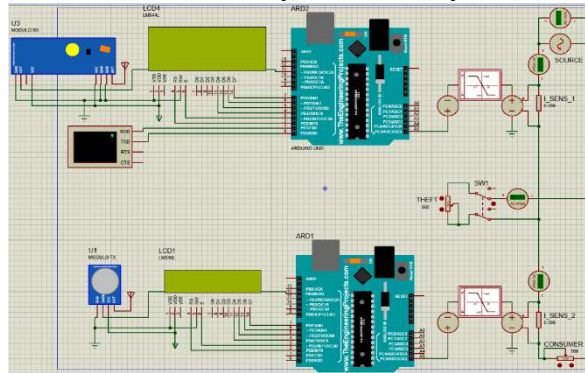
The internal resistance of potentiometer is equal it full resistances (500 Ohm) * percent. From the last figure, it can be clearly seen that voltage drop across a 98 mΩ resistor (its equal to

wcs2702 internal resistance) and amplifying the signal to the levels specified in the data sheet for the wcs2702 module [13].

4.3 The simulation of the power theft detection circuit:

Here, in Proteus simulation, Arduino at pole 1 will calculate electricity theft and transmit data via the UART interface to the UART-terminal embedded in the Proteus as shown in figure 12. When developing a real project (in hardware), the UART interface easily connects to a computer COM port or USB port through USB-RS232 adapter.

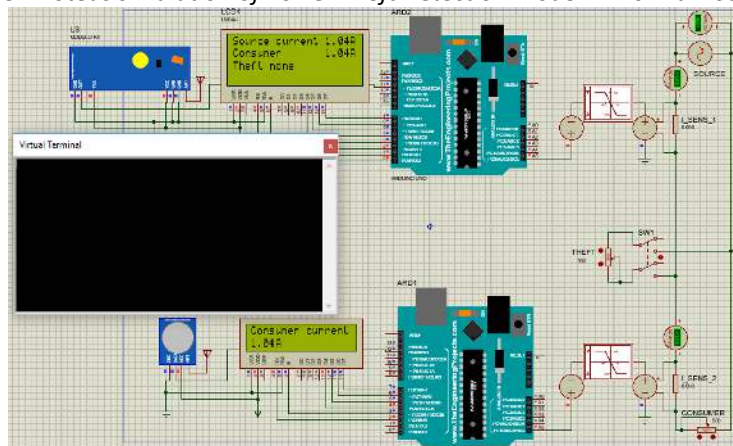
Figure 12. Simulation result of the Power Theft Detection System.



4.4 Results of The simulation of the power theft detection circuit:

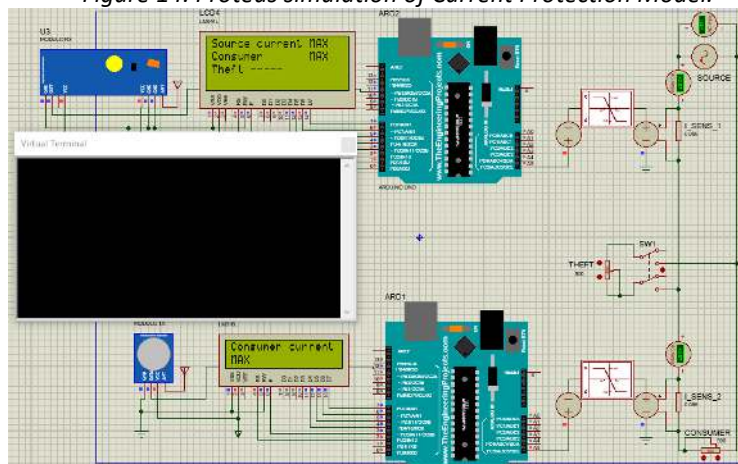
In normal condition (no theft) (Figure 13) consumer part send to source part information about own current consumption and source part compared it with own measured line current. As far as this data is similar, no power theft signal is generated.

Figure 13. Proteus simulation of Power Theft Detection Model in Normal Load Condition.



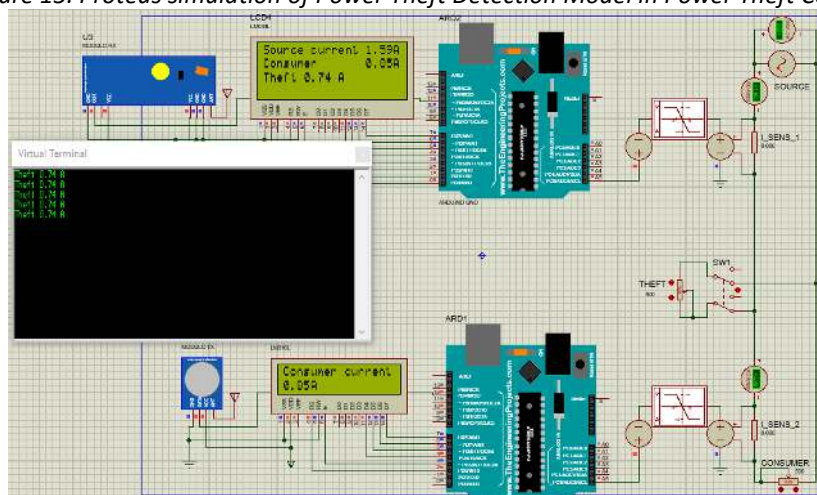
Also model has a program over current protection – if consumer current is greater than current limit of wcs2702 module, then it shows on LCD display (Consumer current: MAX, Source current: MAX) as shown in figure 14.

Figure 14. Proteus simulation of Current Protection Model.



In power theft mode (Figure 15) Source part is detected consumer and source currents mismatch and generated power theft signal on Proteus terminal by UART interface.

Figure 15. Proteus simulation of Power Theft Detection Model in Power Theft Condition.



4.5 The source code of Master kit for wireless communication using RF433 module:

```
RH_ASK driver; //tx module declaration.
float previous_source_current=0; //for error response protection.
driver.init(); //rx modules init.
void loop() {uint8_t buf[12]; uint8_t buflen = sizeof(buf);
```

```
if (driver.recv(buf, &buflen)) { //whole further algorithm is done only if the data came to the receiver.
```

```
float source_current=0; unsigned long tm=millis(); // tm will stored system time on beginning of while(millis()-tm<50) cycle.
```

```
while(millis()-tm<50) { //during 50 ms we read the ADC data, convert it to source current (sc) value (rms ac value) and looking the max value.
```

```
float sc = (float(analogRead(A5)*5)/1024.0-2.4911)/(0.098*7.346)/sqrt(2);  
if(sc>source_current){ source_current=sc; }
```

```
if((source_current-previous_source_current > 0 ? source_current  
previous_source_current:vious_source_current-source_current) < source_current*0.03)  
// it means further code will do if measured source current equal previous measured source  
current +/- 3% . It needs because consumer and source parts work is asynchronous and if  
model work conditions are changed and new consumer current will compare with previous  
source current it be miscalculation. So currents comparing provided when current doesn't  
change and so system work condition is stable. +/- 3% because there is ADC conversion error.
```

```
if(source_current<2.45) // if measured value do not exceed wcs2702 current limit;  
lcd.print(source_current).
```

```
String received=(char*)buf; float consumer_current=received.toFloat();
```

```
if(consumer_current<2.45) { // if measured value do not exceed wcs2702 current limit
```

```
lcd.print(consumer_current); }else{ lcd.print("MAX ");  
if(source_current<2.45&&consumer_current<2.45) // if measured value do not exceed  
wcs2702 current limit.
```

```
if(( (source_current-consumer_current)>=0 ? (source_current-consumer_current) :  
(consumer_current-source_current) ) < source_current*0.05) // finding module  
source_current-consumer_current and 5% is need because ADC convert error (in other words  
consumer current may few exceed source current);
```

```
lcd.print("none "); }else{ lcd.print(source_current-consumer_current); lcd.print(" A");  
Serial.print("Theft "); Serial.print(source_current-consumer_current); Serial.println(" A");  
}}else{ lcd.print("-----"); // if measured currents exceed wcs2702 current limit impossible to  
find power theft.
```


5. Conclusion

A wired connection uses cables to connect Arduino uno kit with devices was used to carry either digital or analogue signals from one end to the other. While a wireless connection uses Proteus simulator to connect Arduino with devices was used. There are differences between the wire and wireless connection between the Master and the Slave boards. The differences in data transfer between the two boards are clearly shown in the microcontroller programming. In wire connection we needed to use wire library, commands and functions related wire data sending and receiving including join i2c bus, register event, ADC result for current, requesting address from consumer Arduino, Sending consumer current to source part Arduino, minimizing the measurement error produced by ACS712, receiving a byte as character, protection from ADC convert error, and finding current value from ADC value. However, in wireless connection we needed to use wire library, commands and functions related wire data sending and receiving including tx and rx modules declaration, error response protection, storing system time on beginning, receiving data from Slave board, reading the ADC data, then converting it to source current, and protection from ADC conversion error. This paper is the fourth fact paper in a series of papers.

6. References

- [1] Virendra Pandey, Simrat Singh Gill, Amit Sharma, 2013, Wireless Electricity Theft Detection System Using Zigbee Technology, International Journal on Recent and Innovation Trends in Computing and Communication, ISSN2321-8169, volume1 Issue: 4.
- [2] Sagar Patil , Gopal Pawaskar , Kirtikumar Patil, April 2013, ELECTRICAL POWER THEFT DETECTION AND WIRELESS METER READING, International Journal of Innovative Research in Science, Engineering and Technology Vol. 2, Issue 4, Copyright to IJRSET www.ijrset.com 1114.
- [3] G. L. Prashanthi, K. V. Prasad, Nov - Dec. 2014, Wireless power meter monitoring with power theft detection and intimation system using GSM and Zigbee networks, IOSR Journal of Electronics and Communication Engineering (IOSR-JECE) e-ISSN: 2278-2834,p-ISSN: 2278-8735.Volume 9, Issue 6, Ver. I, PP 04-08 www.iosrjournals.org www.iosrjournals.org 4 | Page.
- [4] Damian O. Dike , Uchechukwu A. Obiora , Euphemia C. Nwokorie , Blessing C. Dike, 2015, Minimizing Household Electricity Theft in Nigeria Using GSM Based Prepaid Meter, American Journal of Engineering Research (AJER) e-ISSN : 2320-0847 p-ISSN : 2320-0936 Volume-4, Issue-1, pp-59-69 www.ajer.org.
- [5] Sunita Saini, January 2018, ELECTRICITY THEFT-A PRIMARY CAUSE OF HIGH DISTRIBUTION LOSSES IN INDIAN STATE, International Research Journal of Management and Commerce ISSN: (2348-9766), Impact Factor-5.564, Volume 5, Issue 1, Website- www.aarf.asia,

Department of Management Studies, DCR University Science & Technology, Sonapat, India.

- [6] November 2017, International Journal of Advanced Research in Electrical, Electronics and Instrumentation Engineering (An ISO 3297: 2007 Certified Organization) Vol. 6, Special Issue 3, Copyright to IJAREEIE www.ijareeie.com 72, "Power Theft Identification Using GSM Technology". Rhea Prakash, E. Annie Elisabeth Jebaseeli, and Y.S.U.Sindhu. Department of Electrical and Electronics Engineering, Sathyabama University, Rajiv Gandhi Salai, Chennai, India.
- [7] MATEC Web of Conferences 160, 02010 (2018) , EECR 2018., " Designing and Modeling of Automated Anti-theft Electricity Distribution System". Researches Awais Khan¹ Wei Xie¹, Suhail Aftab Qureshi², Muhammad Ilyas³, JingChun Lin⁴ and Guidong Liu⁴ ¹ College of Automation Science and Technology, South China University of Technology, Guangzhou, China, Electrical Engineering Department, UET Lahore, Pakistan ³Iqra International University Peshawar, Pakistan. ⁴College of Electrical and Information Engineering, GuangDong Baiyun University, Guangzhou, China.
- [8] <https://www.arduino.cc/>
- [9] [Datasheets/Products/433Mhz_RF-TX&RX.pdf](https://www.arduino.cc/Datasheets/Products/433Mhz_RF-TX&RX.pdf).
- [10] https://en.wikipedia.org/wiki/RF_module
- [11] International Research Journal of Engineering and Technology (IRJET) e-ISSN:2395-0056 Volume: 05 Issue: 2018 www.irjet.net p-ISSN:2395-0072.
- [12] © Winson, 2019/1/21
- [13] <https://www.dnatechindia.com/SENSORS/WCS2702-Current-sensor.html>
- [14] https://en.wikipedia.org/wiki/Root_mean_square.